



Manual

Introduction

TripleSplit is a software specially developed for TripleSigns products.

It can process a large number of signs in very little time compared to creating the images needed in any imaging processing application, and it's very easy to use.

TripleSplit is written for the .NET platform in 100% managed code.


1. System requirements

TripleSplit requires the following to work properly:

- Operating System:** Windows 2000 Service Pack 4 or later, Windows XP with Service Pack 1 or later, Older versions of Windows is unknown to work.
- Processor:** Pentium class processor or similar, 2 GHz or better recommended.
- Memory:** At least 512Mb or more, 1GB of memory recommended.
- Hard drive:** 5Mb for TripleSplit, at least 2GB for temporary storage and output image files.
- Misc:** .NET Framework 1.1 with Service Pack 1.

2. Usage

2.1. Opening files



The screenshot shows the 'Input' section of the TripleSplit application. It contains three rows, each for a file input. Each row consists of a text input field, a 'Browse' button, and a 'Preview' button. The labels 'File #1', 'File #2', and 'File #3' are positioned to the left of their respective input fields.

By clicking the “Browse” buttons in the Input field you can choose your source files, TripleSplit supports a number of formats including Tiff, Jpeg, Gif and more, The source images should be print quality, Recommended resolution is 300Dpi.

If you are unsure what picture you have selected you can click the “Preview” button next to the “Browse” button to create a preview.

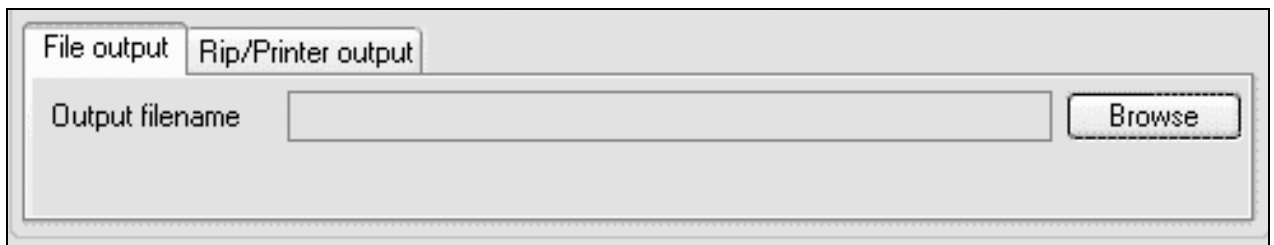


2.2 Selecting output format

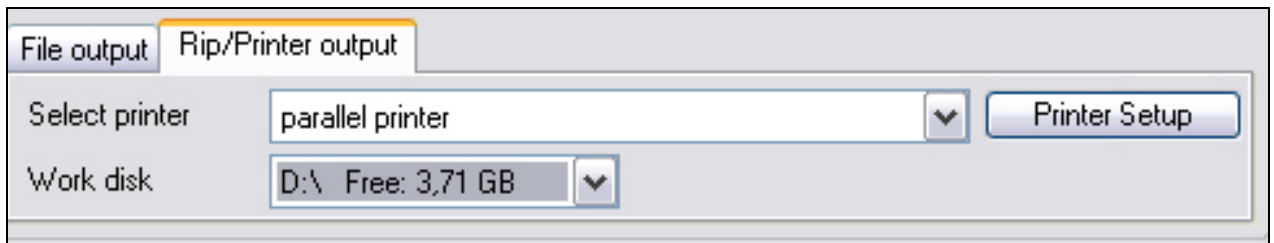
TripleSplit supports output both to file and direct to printer or RIP. By clicking the output format tab and selecting either “File output” or “Rip/Printer output” you get different options.

When selecting File output, Click on the “Browse” button next to the Output directory field to browse for a folder or type in you own path, the application will ask you if you want to create the output directory if it does not exist. In the output format box, select the appropriate format you want the images in and enter a filename to be created.

All images are saved with highest quality settings to ensure that the result is good.



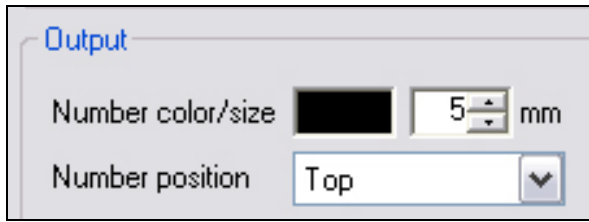
When choosing printer or rip output, Select the printer you want your images to be printed to and click on the “Printer Setup” button to change the selected printers’ settings, it’s a good idea to change the media type and so forth.



When you have selected the printer you want you have to select a “work disk”, this is where the temporary images will be stored while the program is processing them, it’s a good idea to have at least 2GB or more free on that drive, and a faster drive means faster image processing.

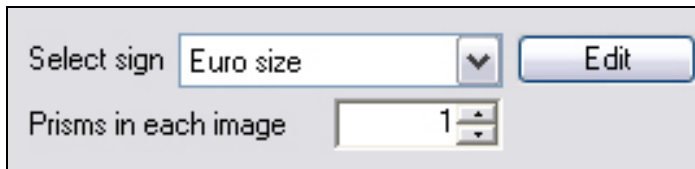
2.3 Changing image numbering

These options lets you change the image numbering size and position on the output images, since it can be hard to keep track on which part goes where when the sign is being set up.



Click on the black area to choose the color of the numbers on the images. Then set the size of the text, and finally choose the position on the image for the text, The options are “Top”, “Bottom” and “Top and Bottom”.

2.4 Selecting sign type

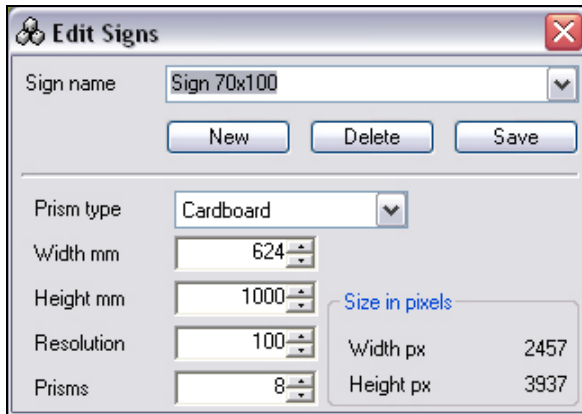


Here is where you select what type of sign you are preparing the images for, there are a few predefined sign types and you can easily add new signs and edit current signs by clicking the “Edit” button, more about editing signs in the next section.

The “Prisms in each image” option lets you place a number of prisms on each output image, when you send the output direct to printer or rip you might not want to spend more media then necessary so just change this value to fit your current media in your printer.

2.5 Editing signs

The edit signs dialog provides an easy way to change the output image properties, When you click the “Edit” button you are presented with the following dialog.



Select the sign you want to edit or type in a new name to create a new sign, you can also click the “New” button to have all values set to “0”. Change the height and width to fit the sign you want to create prisms for. The resolution field defines in which resolution the output images will be created, and prisms define how many prisms there are in the sign.

Click “Save” when you are done editing to store your sign in the signs.xml file located in the program directory.

Note: The signs file will be overwritten when the program is reinstalled and it will be deleted when the program is uninstalled, so it’s a good thing to have a backup copy of it. The “Delete” button deletes the currently selected sign.

The difference between Cardboard and Aluminium is how we split the input images.



In case of aluminium prism type the output will look like this(in this example one side of the three images in one image)



In case of cardboard prism type the output will look like this(three sides of a prism in one image)

2.6 Starting the image processing

When you are done configuring your settings click the “Start processing” button to begin the prisms creation process, you will be notified in the log field what the program is currently doing.

3 Troubleshooting

3.1 Program wont start or similar

If the program won't start at all you probably don't have the required software installed, TripleSplit requires the .NET framework 1.1 with .NET framework 1.1 Service Pack 1 installed. The .NET framework 1.1 is installed during the setup process if you don't already have it installed on the machine, but the .NET framework Service Pack 1 has to be installed manually, Insert your TripleSplit CD and you will be presented with a setup launcher, you can install the service pack release from there.

3.2 Errors during the image creation process

Creating high resolution images takes up a lot of memory, if you in the log window get a error of the type "OutOfMemory" your system has run out of ram, try closing some applications and try again. If you get this memory anyway and you are processing a very large sign, try to select a lower resolution in the "Edit signs" dialog.

3.3 Other errors

If you get errors that are not brought up in this manual please send us a mail at triplesplit@triplesign.com and tell us what you did when the error occurred, it would also help us out if you provided the source images width, height and resolution, the output sign width, height, resolution and number of prisms so we can try to reproduce the error that you got. It would also help with a screenshot of the error, and the error message itself.